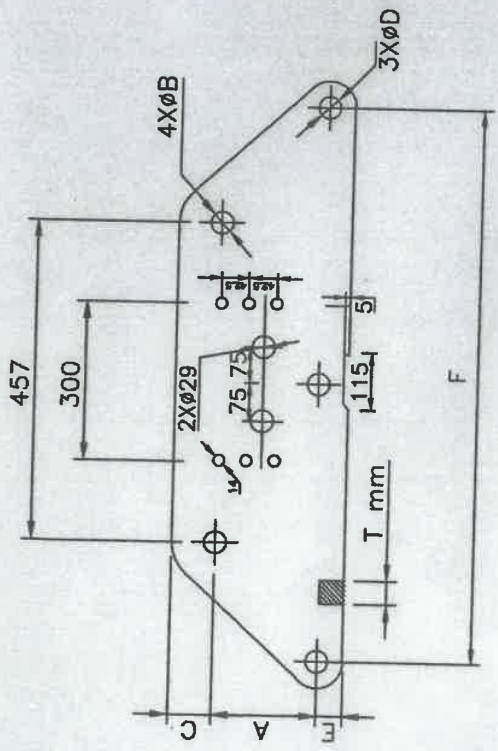


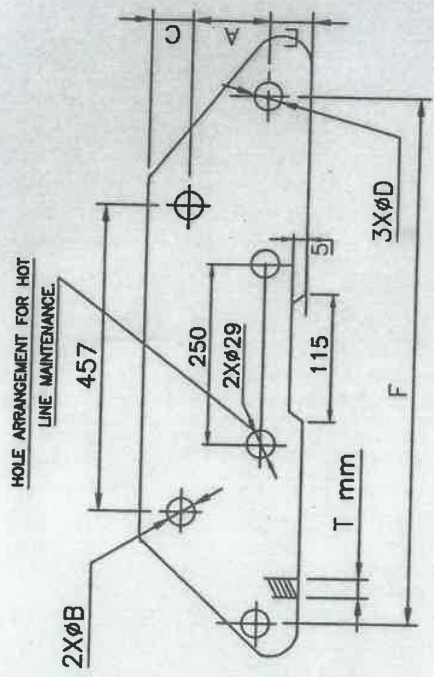
TECHNICAL DETAILS:-

- 1) ALL DIMENSIONS ARE IN MM.
- 2) GENERAL TOLERANCE $\pm 3\%$
- 3) ALL FERROUS PARTS ARE HOT DIP GALVANISED AS PER POWERGRID SPECIFICATION.
- 4) ALL DIMENSIONS ARE AFTER GALVANISATION EXCEPT DRILLED HOLES.

PART NO.	UTS (KN)	T	A	B	C	D	E	F
YP-TP-470-01	470	22	120	24	38	24	38	792
YP-TP-350-02	350	20	120	24	36	24	36	914
YP-TP-80-02	180	16	80	22	33	24	36	914



TYPE-01



TYPE-02

**POWER GRID CORPORATION
OF INDIA LIMITED**
(A GOVERNMENT OF INDIA ENTERPRISE)



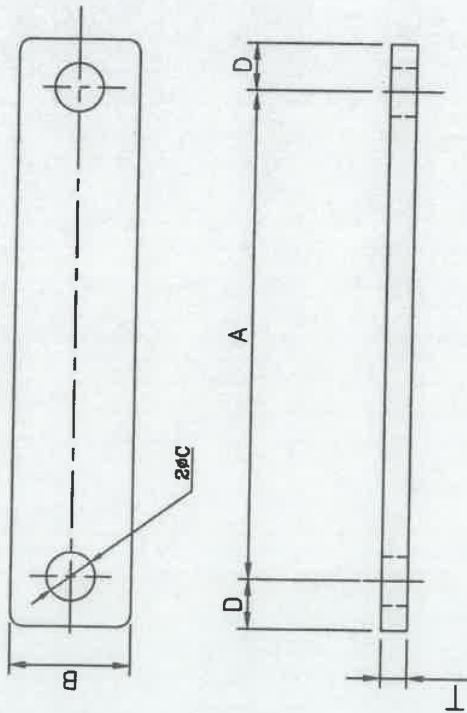
CLEARED BY

SR. QM (ENGG-TL)	SR. QM (ENGG-TL)	ED (ENGG)	TITLE:- TRAPEZOIDAL YOKE PLATE
14/11/19	21/3/21	21/3/21	
DATE	MGR. (ENGG-TL)	CH. MGR. (ENGG-TL)	DRG. NO. :- CC:ENGG:TL/HW:YP-TP-001
		GM (ENGG-TL)	


No.	YOKE PLATE DESCRIPTION	MATERIAL	QTY.
1		MILD STEEL IS-410 IS:2062	

TECHNICAL DETAILS:-


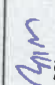

- 1) ALL DIMENSIONS ARE IN mm.
- 2) GENERAL TOLERANCE $\pm 3\%$
- 3) ALL FERROUS PARTS ARE HOT DIP GALVANISED AS PER POWER GRID SPECIFICATION
- 4) ALL DIMENSIONS ARE AFTER GALVANISATION EXCEPT DRILLED HOLES.



Part No.	UTS	T	A	B	C	D
EL-920-01	920	32	790	125	42	90
EL-640-01	640	30	160	125	39	70
EL-420-01	420	25	400	80	33	55
EL-160-01	160	16	300	60	24	36
EL-80-01	80	16	360	50	22	40


**POWER GRID CORPORATION
OF INDIA LIMITED**
 (A GOVERNMENT OF INDIA ENTERPRISE)

CLEARED BY

 SR GM (ENGG-TL)	 CSM (ENGG-TL)	 ED (ENGG)
--	---	---

TITLE:- EXTENSION LINK

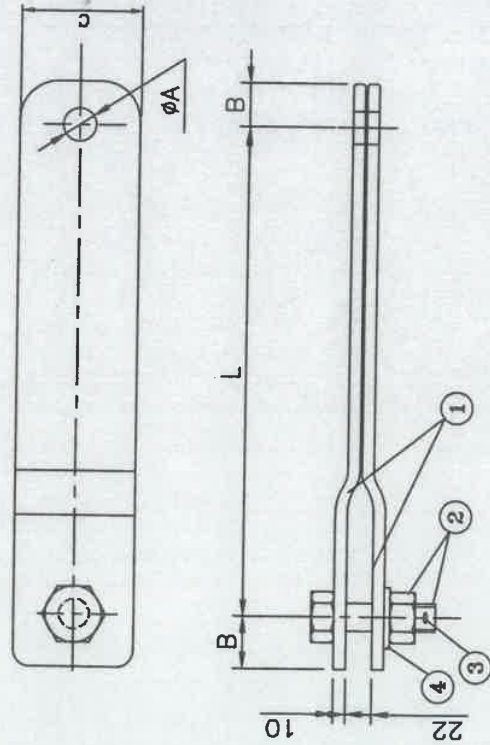
19.11.19  MGR. (ENGG-TL)	 CH. MGR. (ENGG-TL)	 GM (ENGG-TL)
--	--	--

DRG. NO. :- CC:ENGG:TL/HW:EL-001

No.	EXTENSION LINK DESCRIPTION	MS PLATE MATERIAL	QTY.
1			

TECHNICAL DETAILS:-

- 1) ALL DIMENSIONS ARE IN mm.
- 2) GENERAL TOLERANCE $\pm 3\%$
- 3) ALL FERROUS PARTS ARE HOT DIP GALVANISED AS PER POWER GRID SPECIFICATION
- 4) ALL DIMENSIONS ARE AFTER GALVANISATION EXCEPT DRILLED HOLES.



PART No.	UTS	A	B	C	L	Bolt Size & Grade
YS-240-01	240	24	36	65	150	M22(8.8)
YS-160-01	160	24	36	50	125	M22(5.6)
YS-160-02	160	24	36	50	250	M22(5.6)
YS-120-01	120	22	33	50	200	M20(5.6)
YS-120-02	120	22	33	50	600	M20(5.6)

**POWER GRID CORPORATION
OF INDIA LIMITED**
(A GOVERNMENT OF INDIA ENTERPRISE)



CLEARED BY

SR. GM (ENGG-TL) *[Signature]*
CGM (ENGG-TL) *[Signature]*
ED (ENGG) *[Signature]*

TITLE:- Y-STRAP

DATE 14-11-19
MGR. (ENGG-TL) *[Signature]*
CH. MGR. (ENGG-TL) *[Signature]*
GM (ENGG-TL) *[Signature]*

DRG. NO. :- CC:ENGG:TL/HW:YS-001

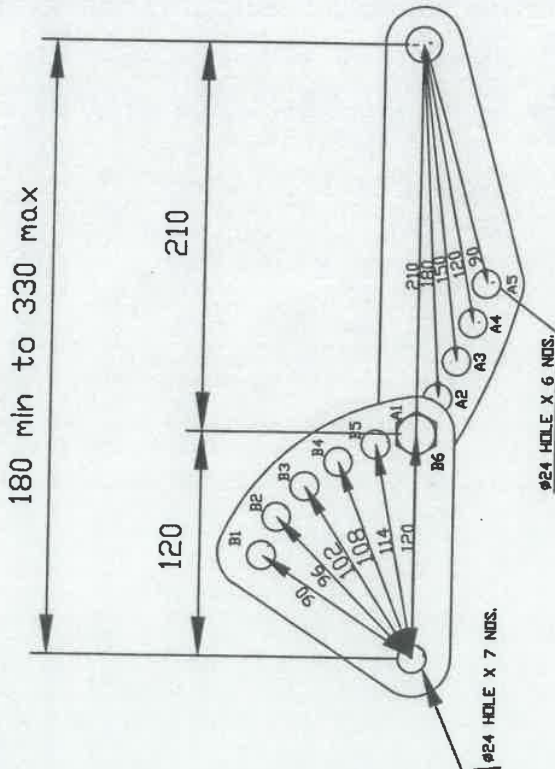
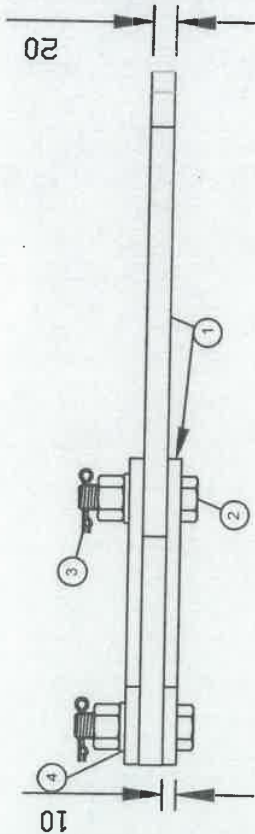
No.	DESCRIPTION	MATERIAL	QTY.
4	PLAIN WASHER	MILD STEEL, Fe-410,IS:2002	1
3	SPLIT PIN	STAINLESS STEEL, AISI-304	1
2	BOLT & NUT	MILD STEEL	1,1
1	Y-STRAP	MILD STEEL, Fe-410,IS:2002	1 SET
			1 SET

TECHNICAL DETAILS:-

- 1) ALL DIMENSIONS ARE IN mm.
- 2) GENERAL TOLERANCE $\pm 3\%$
- 3) ALL FERROUS PARTS ARE HOT DIP GALVANISED AS PER POWER GRID SPECIFICATION
- 4) ALL DIMENSIONS ARE AFTER GALVANISATION EXCEPT DRILLED HOLES.
- 5) ADJUSTMENT RANGE:-

	A5	A4	A3	A2	A1
B1	180	210	240	270	300
B2	186	216	246	276	306
B3	192	222	252	282	312
B4	198	228	258	288	318
B5	204	234	264	294	324
B6	210	240	270	300	330

PART No. SAP-160-01



**POWER GRID CORPORATION
OF INDIA LIMITED**
(A GOVERNMENT OF INDIA ENTERPRISE)



CLEARED BY

SR. ENGR. (ENGG-TL)

CGM (ENGG-TL)

ED (ENGG)

TITLE:- SAG ADJUSTMENT PLATE

No.	DESCRIPTION	MATERIAL	QTY.
4	PLAIN WASHER	MILD STEEL, Fe-410, IS:2062	2
3	SPLIT PIN	STAINLESS STEEL, AISI-304	2
2	NUT & BOLT (M22)	MILD STEEL, Fe-410, IS:2062	2.2
1	SAG ADJUSTABLE PLATE	MILD STEEL, Fe-410, IS:2062	1SET

DATE 14.11.19

MGR. (ENGG-TL)

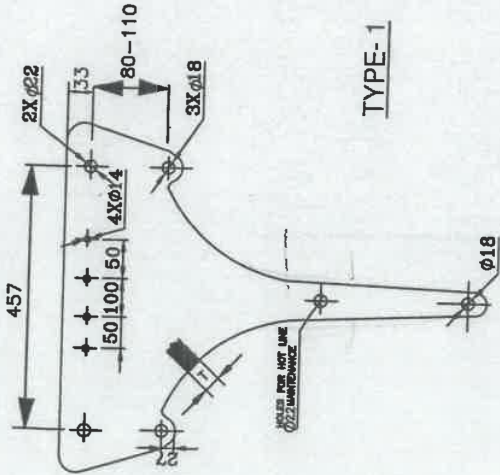
CH. MGR. (ENGG-TL)

DRG. NO. :- CC:ENGG:TL/HW:SAP-001

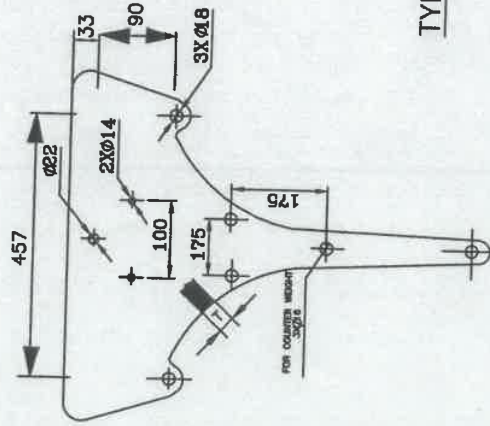
TECHNICAL DETAILS:-

- 1) ALL DIMENSIONS ARE IN mm.
- 2) GENERAL TOLERANCE $\pm 3\%$
- 3) ALL FERROUS PARTS ARE HOT DIP GALVANISED AS PER POWER GRID SPECIFICATION.
- 4) ALL DIMENSIONS ARE AFTER GALVANISATION EXCEPT DRILLED HOLES.

PART No.	UTS(KN)	TYPE	T
YP-C-T-240-01	240	1	16
YP-C-T-120-02	120	2	16



TYPE-1



TYPE-2

POWER GRID CORPORATION
OF INDIA LIMITED
(A GOVERNMENT OF INDIA ENTERPRISE)



CLEARED BY

<i>[Signature]</i> SR. GM (ENGG-TL)	<i>[Signature]</i> COM (ENGG-TL)	<i>[Signature]</i> ED (ENGG)
14.11.19	<i>[Signature]</i> MGR. (ENGG-TL)	<i>[Signature]</i> CH. MGR. (ENGG-TL)
		<i>[Signature]</i> GM (ENGG-TL)

TITLE:- CONDUCTOR YOKE PLATE

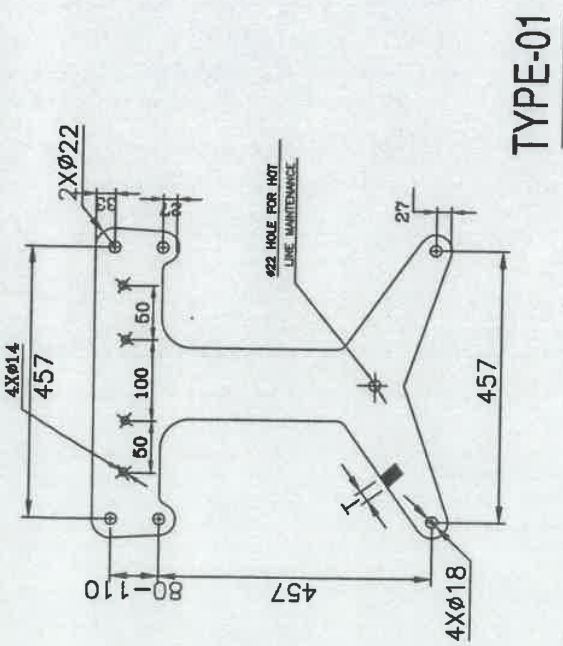
DRG. NO. : CC:ENGG:TL/HW:YP-C-T-001

No.	YOKE PLATE DESCRIPTION	MILD STEEL Fe-410 IS:2062 MATERIAL	1	QTY.

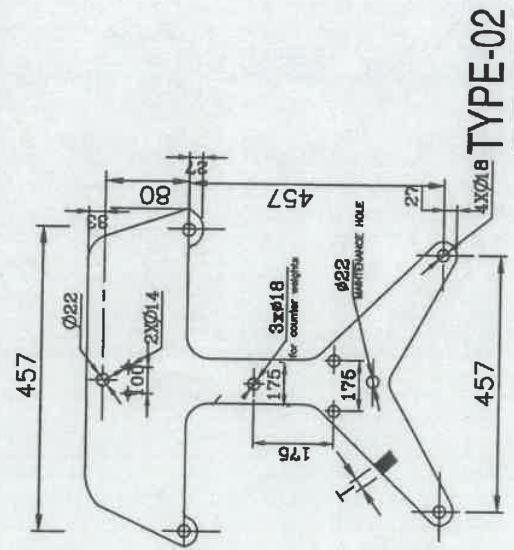
TECHNICAL DETAILS:-

- 1) ALL DIMENSIONS ARE IN mm.
- 2) GENERAL TOLERANCE $\pm 3\%$
- 3) ALL FERROUS PARTS ARE HOT DIP GALVANISED AS PER POWER GRID SPECIFICATION.
- 4) ALL DIMENSIONS ARE AFTER GALVANISATION EXCEPT DRILLED HOLES.

PART No.	UTS(KN)	TYPE	T
YP-C-Q-240-01	240	1	16
YP-C-Q-120-02	120	2	16



TYPE-01



TYPE-02

POWER GRID CORPORATION OF INDIA LIMITED
(A GOVERNMENT OF INDIA ENTERPRISE)



CLEARED BY

SR. GRM (ENGG-TL) *[Signature]*
CGM (ENGG-TL) *[Signature]*
ED (ENGG)

TITLE:- CONDUCTOR YOKE PLATE

DATE 14.11.19 21:32
MGR. (ENGG-TL)
CH. MGR. (ENGG-TL)
GM (ENGG-TL)

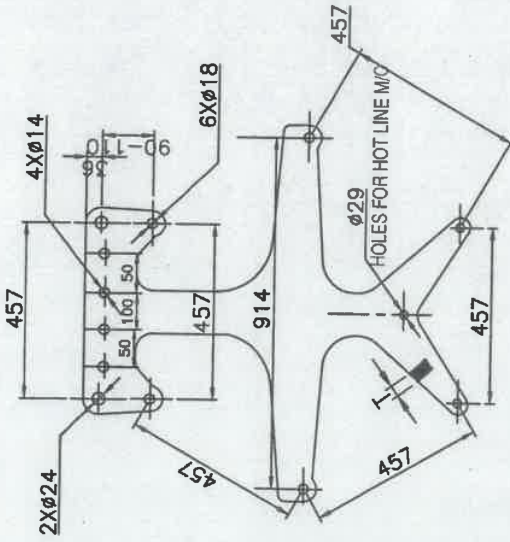
DRG .NO. :- CC:ENGG:TL/HW:YP-C-Q-001

1	YOKE PLATE	MILD STEEL Fe-410 IS:2062	1
No.	DESCRIPTION	MATERIAL	QTY.

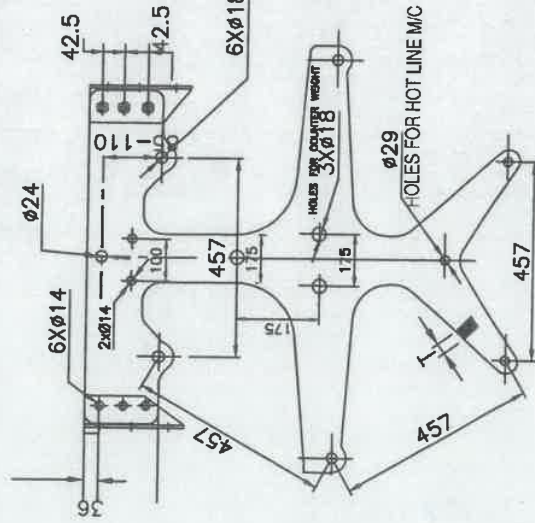
TECHNICAL DETAILS:-

- 1) ALL DIMENSIONS ARE IN mm.
- 2) GENERAL TOLERANCE $\pm 3\%$
- 3) ALL FERROUS PARTS ARE HOT DIP GALVANISED AS PER POWER GRID SPECIFICATION
- 4) ALL DIMENSIONS ARE AFTER GALVANISATION EXCEPT DRILLED HOLES.

PART NO.	UTS(KN)	TYPE	T
YP-C-H-350-01	350	1	20
YP-C-H-160-02	160	2	16



TYPE 01



TYPE 02

No.	YOKE PLATE DESCRIPTION	MILD STEEL Fe-410 IS:2062 MATERIAL	1	QTY.

**POWER GRID CORPORATION
OF INDIA LIMITED**
(A GOVERNMENT OF INDIA ENTERPRISE)



CLEARED BY

SR. GM
(ENGG-TL)

GM
(ENGG-TL)

ED
(ENGG)

14/11/19

MGR.
(ENGG-TL)

CH. MGR.
(ENGG-TL)

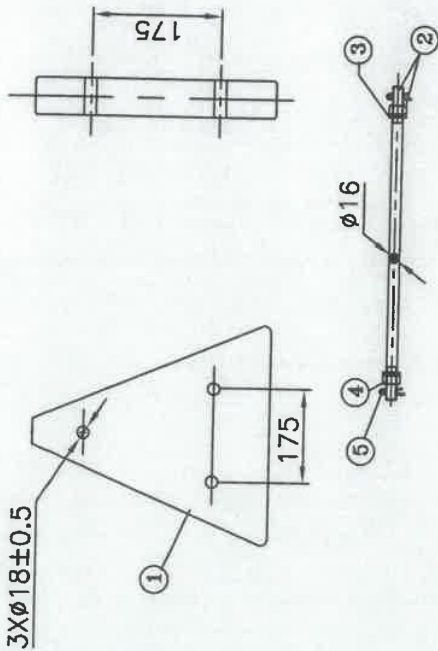
GM
(ENGG-TL)

TITLE:- CONDUCTOR-YOKE PLATE

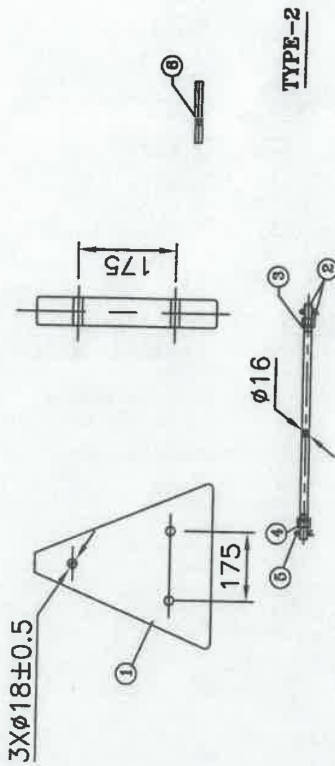
DRG. NO. :- CC:ENGG:TL/HW:YP-C-H-001

TECHNICAL DETAILS:

- 1) ALL DIMENSION ARE IN mm
- 2) GENERAL TOLERANCES $\pm 3\%$
- 3) ALL FERROUS PARTS ARE HOT DIP GALVANISED AS PER POWER GRID SPECIFICATION.
- 4) ALL DIMENSIONS ARE AFTER GALVANISATION EXCEPT DRILLED HOLES.
- 5) MIN. NO. OF DIPS IN STANDARD PREECE TEST (ONE MINUTE DURATION)
 - (i) SPRING WASHERS : 3 DIPS.
 - (ii) FASTENERS : 4 DIPS.
 - (iii) ALL OTHER FERROUR PARTS : 6 DIPS.



TYPE-1



TYPE-2

PART NO.	TYPE	TOTAL WEIGHT (Kg)
CW-01	1	200 (25X8)
CW-02	2	100 (25X4)

**POWER GRID CORPORATION
OF INDIA LIMITED**
(A GOVERNMENT OF INDIA ENTERPRISE)



No.	DESCRIPTION	MATERIAL	QTY.
6	SPACING TUBE	MILD STEEL TUBE IS -1161	3, Only for Type 2
5	SPLIT PIN	STAINLESS STEEL, AISI-304	6
4	SPRING WASHER (M16)	SPRING STEEL IS : 3063 & 4072	6
3	PLAIN WASHER (M16)	MILD STEEL Fe-410, IS:2062	6
2	STUD & NUT (M16)	MILD STEEL Fe-410, IS:2062	3,6
1	COUNTER WEIGHT (25 KG)	CAST IRON IS : 210 / MILD STEEL Fe-410, IS:2062	TYPE 1: 5 NOS. TYPE 2: 4 NOS.
DRG .NO. :- CC:ENGG:TL/HW:CTW-001			

CLEARED BY		TITLE:- COUNTER WEIGHT	
SR. GM (ENGG-TL)	CGM (ENGG-TL)	ED (ENGG)	GM (ENGG-TL)
14/11/19	21/02		
DATE	MGR. (ENGG-TL)	CH./MGR. (ENGG-TL)	

TECHNICAL DETAILS:-

- 1) ALL DIMENSIONS ARE IN mm.
- 2) GENERAL TOLERANCE $\pm 3\%$
- 3) ALL FERROUS PARTS ARE HOT DIP GALVANISED AS PER POWER GRID SPECIFICATION
- 4) ALL DIMENSIONS ARE AFTER GALVANISATION EXCEPT DRILLED HOLES.



PART No.	TYPE	TOTAL WEIGHT (Kg)
CW-03	3	200(25X8)

POWER GRID CORPORATION
OF INDIA LIMITED
(A GOVERNMENT OF INDIA ENTERPRISE)



No.	DESCRIPTION	MATERIAL	QTY.
6	SPLIT PIN	STAINLESS STEEL, AISI-304	2
5	PLAIN WASHER (M16)	MILD STEEL Fe-410, IS:2062	2
4	HEXAGON NUT(M16)	MILD STEEL Fe-410, IS:2062	2
3	COUNTER WEIGHT	CAST IRON IS : 210 / MILD STEEL Fe-410, IS:2062	1
2	'U' BOLT $\phi 16$	MILD STEEL Fe-410, IS:2062	1
1	COUNTER WEIGHT WITH SHAFT & NUT APPROVED DIMENSIONS	FORGED STEEL CLASS IV, IS 2004	1

DATE	MGR. (ENGG-TL)	CH. MGR. (ENGG-TL)	GM (ENGG-TL)	TITLE:- COUNTER WEIGHT
14.11.19	2-10-22	[Signature]	[Signature]	

CLEAR BY	ED (ENGG)
[Signature]	[Signature]

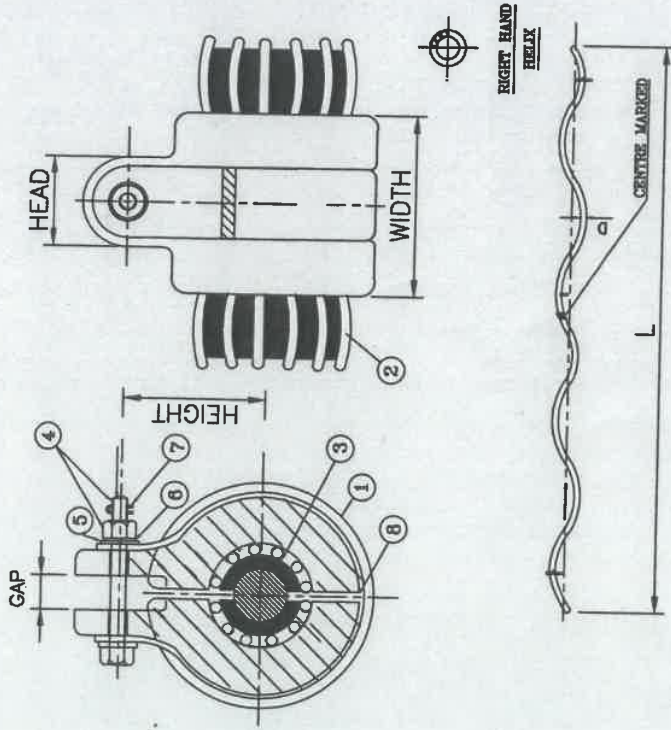
SR. CH. (ENGG-TL)	CGM (ENGG-TL)
[Signature]	[Signature]

DRG .NO. :- CC-ENGG-TL/HT:CV-002

TECHNICAL DETAILS:-

- 1) ALL DIMENSIONS ARE IN mm.
- 2) GENERAL TOLERANCE $\pm 3\%$
- 3) ALL FERROUS PARTS ARE HOT DIP GALVANISED AS PER POWER GRID SPECIFICATION
- 4) ALL DIMENSIONS ARE AFTER GALVANISATION EXCEPT DRILLED HOLES.
- 4) UTS OF CLAMP 70 kN.

PART No.	WIDTH	HEAD	GAP	BOLT	HEIGHT	L	D	Rod/Set
AGS-PANTHER	100-110	45-55	23-26	16 (5.6)	60-80	1760	6.35	11
AGS-ZEBRA	110-140	48-60	24-32	16 (5.6)	70-80	2080	7.87	12
AGS-MOOSE	130-150	50-60	24-32	16 (5.6)	70-80	2235	9.27	12
AGS-SNOWBIRD	110-140	48-60	24-32	16 (5.6)	70-80	2080	7.87	13



POWER GRID CORPORATION OF INDIA LIMITED
(A GOVERNMENT OF INDIA ENTERPRISE)



CLEARED BY		TITLE:- SUSPENSION CLAMP (AGS TYPE)	
SR. (M) (ENGG-TL)	CGM (ENGG-TL)	ED (ENGG)	
14.11.19	21/32		
DATE	MGR. (ENGG-TL)	CH. MGR. (ENGG-TL)	GM (ENGG-TL)

DRG. NO. : CC:ENGG:TL/HW:AGS-001

No.	DESCRIPTION	MATERIAL	QTY.
8	STRAP	HIGH STRENGTH ALU ALLOY 60032/6061, IS:733	1
7	SPLIT PIN	STAINLESS STEEL AISI-304	1
6	SPRING WASHER	SPRING STEEL IS:4072 & IS:3083	1
5	PLAIN WASHER	MILD STEEL Fe-410, IS:2002	2
4	NUT & BOLT	GALV. STEEL IS:2002 & IS:4000	1,1
3	BODY (CUSHIONED)	NEOPRENE	2
2	ARMOUR ROD	H.T. ALUMINIUM ROD 60032/6061, IS:733, IS:2121	1, SET
1	CLAMP BODY	ALUMINIUM ALLOY A-6, IS:617	2